

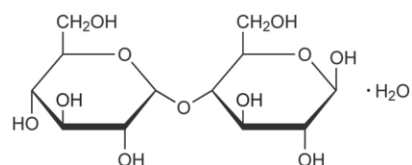
# SUNMALT™-S

## USP-NF

### General

Maltose is a reducing disaccharide consisting of two glucose molecules linked by an  $\alpha$ -1,4 bond. Maltose is manufactured from starch using enzyme technology.

Historically maltose has been a common disaccharide consumed by humans when assimilated into the body from consuming carbohydrate based foods. More recently, maltose has been used as an excipient for tablets or granulation, and as a carbon source in cell culture media.



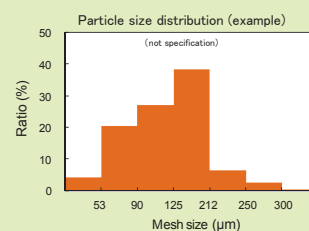
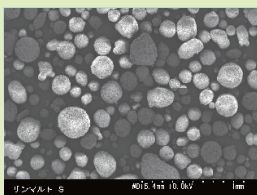
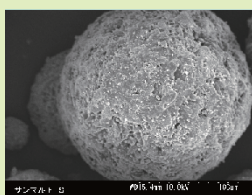
Chemical formula:  $C_{12}H_{22}O_{11} \cdot H_2O$   
Molecular weight: 360.31  
CAS RN®: 6363-53-7

### Properties

- Sweetness is approximately one-third that of sucrose
- Relatively compatible with oils
- Good water solubility
- Easily digested in the small intestine

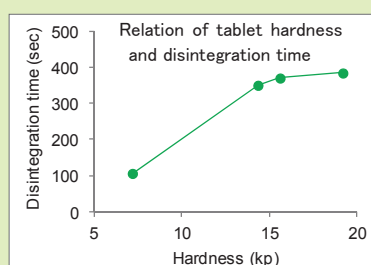
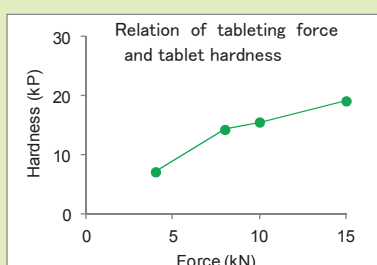
### SUNMALT™-S

- Spray-dried powder composed of relatively small, smooth particles



- Excellent flowability and compatibility with other ingredients
- Good compressibility, enabling tablets to be made by direct compression
- Good hardness and disintegration properties
- Produces uniform tablets

Bulk density	0.725 g/mL
Tapped density	0.818 g/mL
Angle of repose	22.5°
Compressibility	11.3%
Hausner ratio	1.13



## Applications

	Addition of sweetness	Filler	Injection	Energy supply	Culture
SUNMALT™-S	✓	✓		✓	✓


## Packaging

- SUNMALT™-S  
20 kg (3-ply kraft bag)

SUNMALT is a trademark of Nagase Viita and a registered trademark of Nagase Viita in Japan, the U.S. and other countries.

MANUFACTURER : **Nagase Viita Co., Ltd.**  
CONTACT : **Nagase & Co., Ltd.**

Life & Healthcare Products Department  
E-mail: [dnfct@ex.nagase.co.jp](mailto:dnfct@ex.nagase.co.jp)

 The information provided herein is intended only for reference purposes. It is the customer's responsibility to determine that the ingredients meet all legal requirements in the country where they are used, and that they do not infringe on any third party patents. Unauthorized reproduction of this brochure is prohibited.