

FACT BOOK

2002/3

長瀬産業株式会社
NAGASE & CO.,LTD.

主要財務指標 Summary of Financial Data

連結 Consolidated

(百万円 / ¥millions)

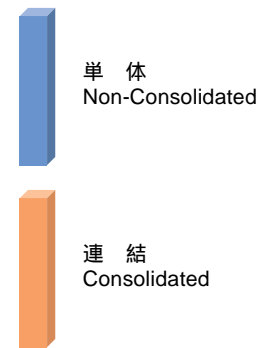
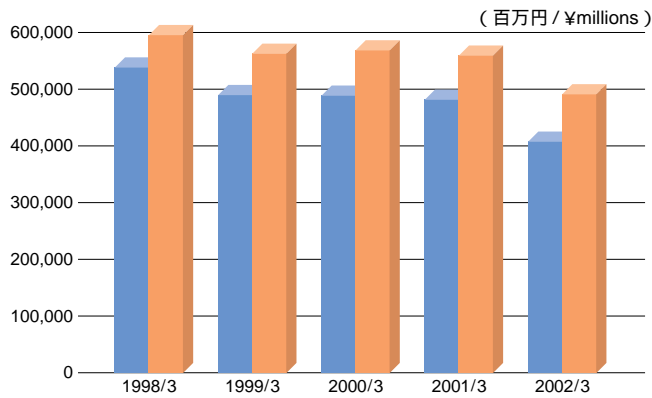
		1998/3	1999/3	2000/3	2001/3	2002/3
売上高	Net Sales	596,127	563,222	568,293	559,372	490,583
売上総利益	Gross Profit	52,844	53,214	55,287	55,140	46,976
営業利益	Operating Income	8,208	7,791	8,147	7,752	1,673
経常利益	Ordinary Income	8,588	8,501	9,885	10,282	4,739
当期純利益又は損失()	Net Income or Loss	4,905	3,560	6,371	4,945	2,097
総資産額	Total Assets	300,781	298,524	316,657	353,776	300,073
純資産額	Net Assets	122,530	125,929	134,838	153,498	144,176
一株当たり純資産(円)	Book Value per Share(¥)	809.17	862.06	952.67	1,104.81	1,082.16
一株当たり当期純利益(円)	Earnings per Share(¥)	32.39	23.76	44.25	35.28	15.39

単体 Non-Consolidated

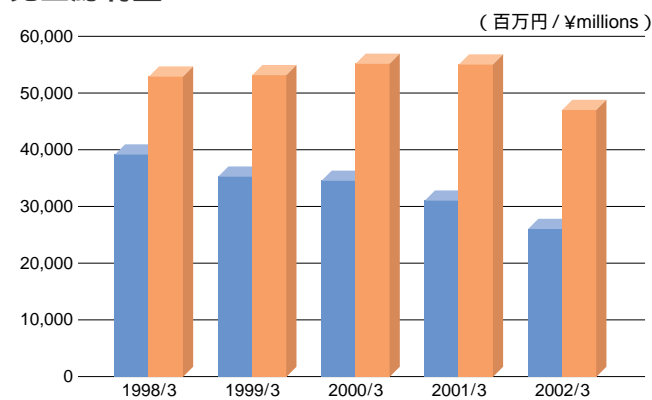
(百万円 / ¥millions)

		1998/3	1999/3	2000/3	2001/3	2002/3
売上高	Net Sales	538,756	490,672	489,639	481,294	407,950
売上総利益	Gross Profit	39,203	35,815	34,496	30,803	26,079
営業利益又は損失()	Operating Income or Loss	7,349	5,392	4,359	2,280	905
経常利益	Ordinary Income	7,578	6,753	6,020	5,697	2,761
当期純利益又は損失()	Net Income or Loss	4,360	3,464	4,127	3,004	2,361
総資産額	Total Assets	252,001	241,229	250,099	284,772	244,916
純資産額	Net Assets	102,193	102,031	105,963	121,970	111,350
発行済株式数(千株)	Number of Shares Outstanding(Thousands of Shares)	151,428	146,079	141,537	138,937	133,230
一株当たり純資産(円)	Book Value per Share(¥)	674.87	698.47	748.66	877.88	835.77
一株当たり当期純利益(円)	Earnings per Share(¥)	28.80	23.11	28.65	21.42	17.33

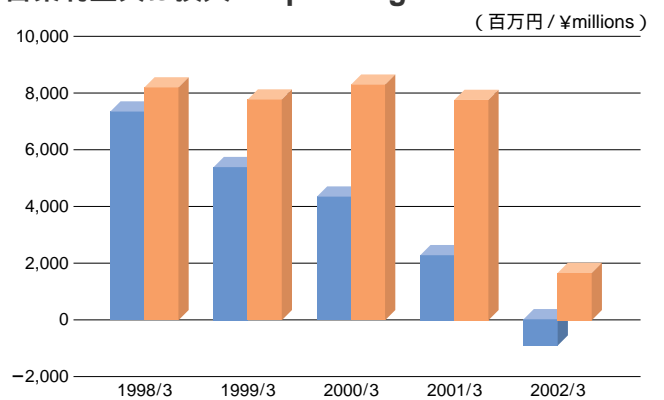
売上高 Net Sales



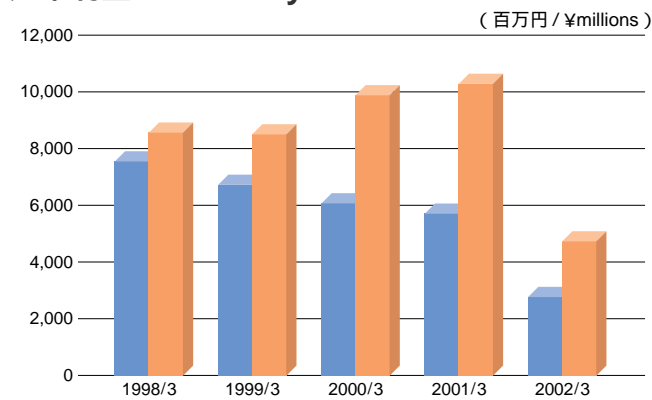
売上総利益 Gross Profit



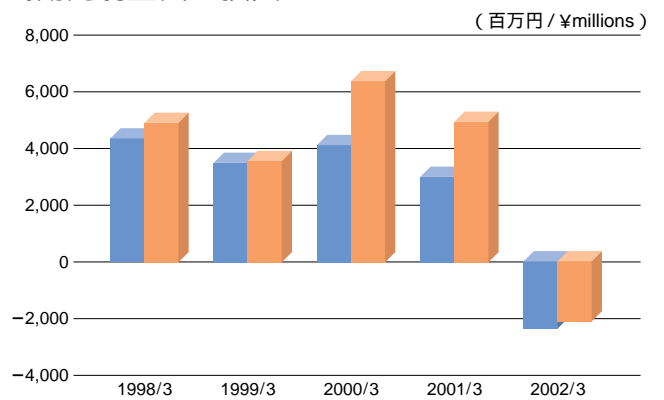
営業利益又は損失 Operating Income or Loss



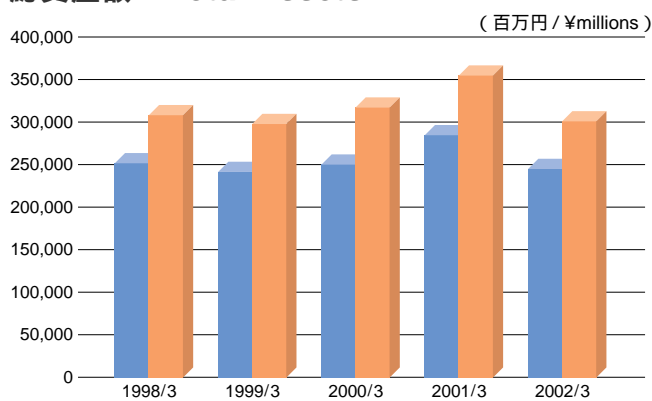
経常利益 Ordinary Income



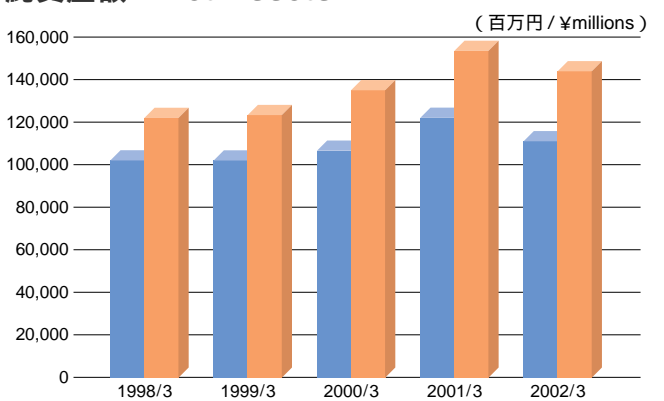
当期純利益又は損失 Net Income or Loss



総資産額 Total Assets



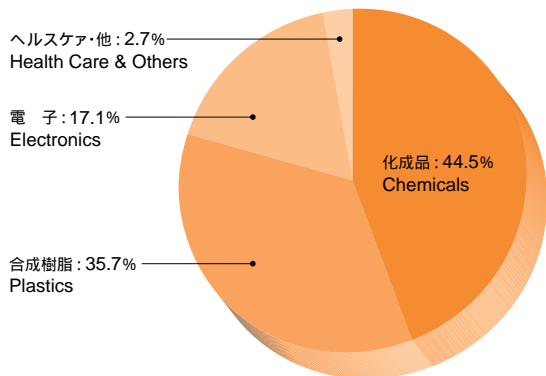
純資産額 Net Assets



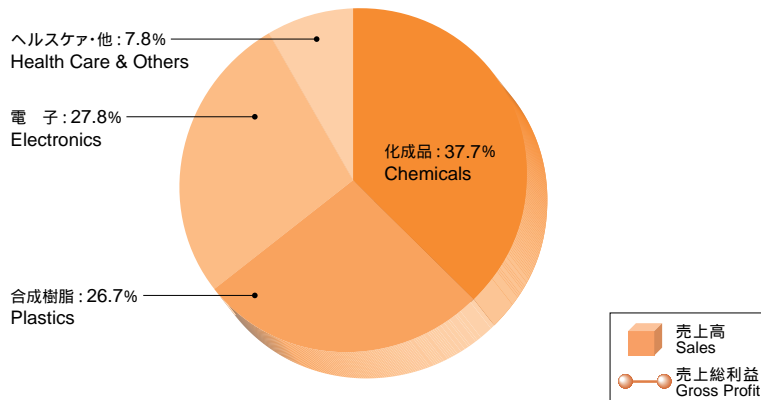
事業別売上高及び売上総利益 Sales & Gross Profit by Business Group

売上高と売上総利益の構成比 Sales & Gross Profit Composition by Business Group (2002/3)

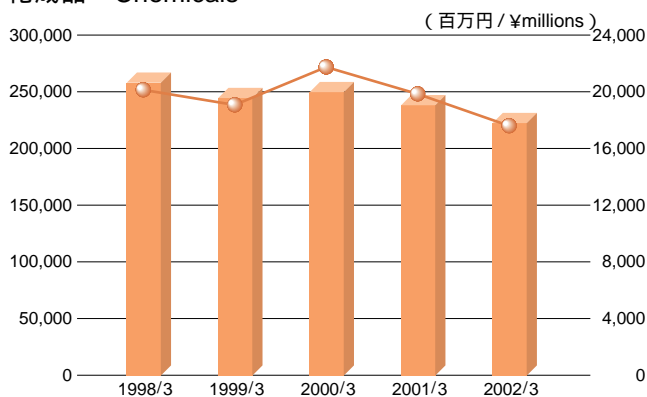
売上高 Sales



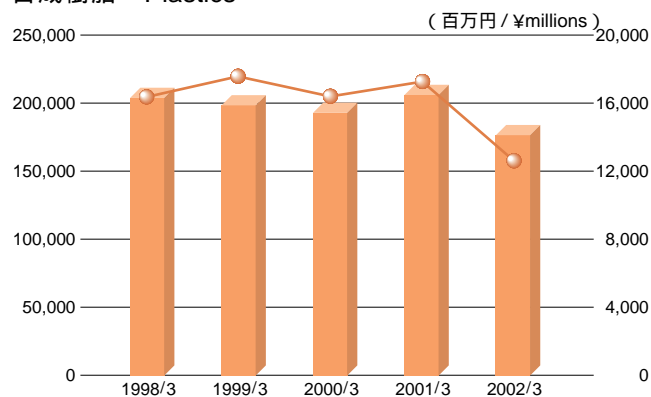
売上総利益 Gross Profit



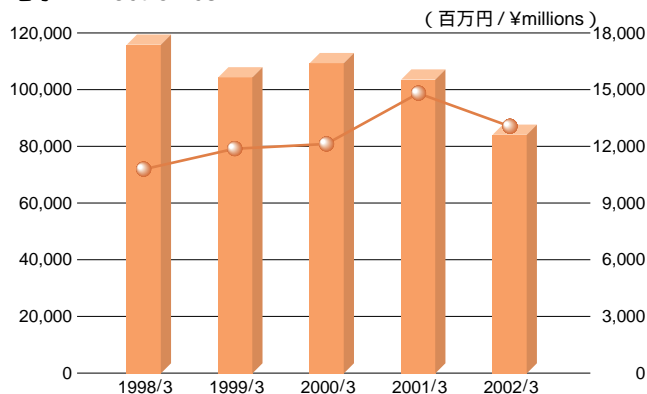
化粧品 Chemicals



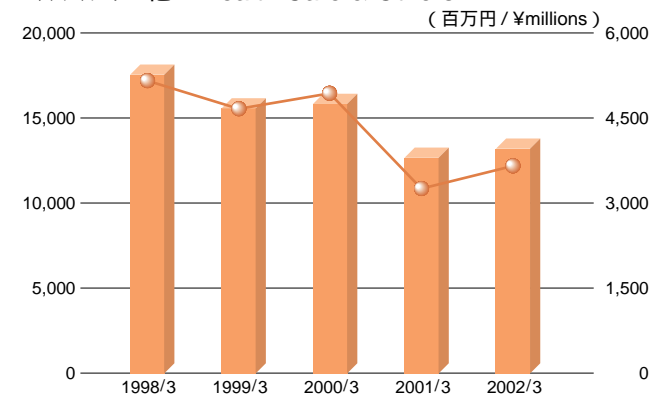
合成樹脂 Plastics



電子 Electronics



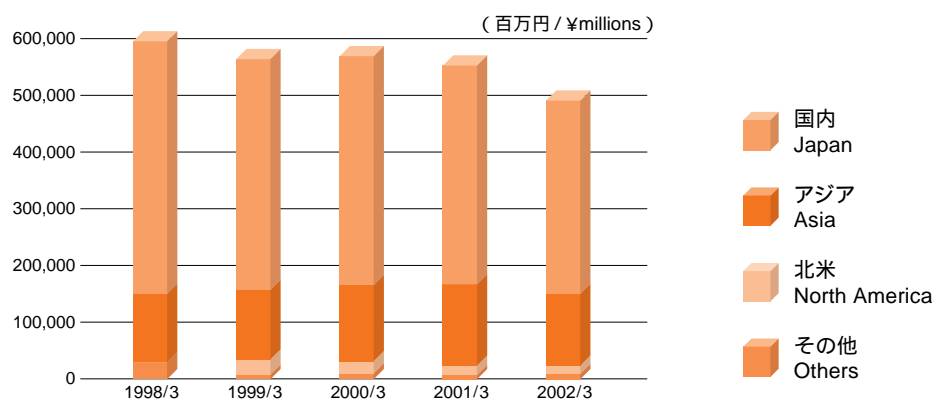
ヘルスケア・他 Health Care & Others



(百万円 / ¥millions / %)

			1998/3	1999/3	2000/3	2001/3	2002/3
化粧品 Chemicals	売上高 Sales		258,293 (43.3)	244,067 (43.3)	249,977 (44.0)	237,871 (42.5)	218,524 (44.5)
	売上総利益 Gross Profit		20,326	19,142	21,864	19,866	17,688
合成樹脂 Plastics	売上高 Sales		204,718 (34.3)	199,188 (35.4)	192,710 (33.9)	205,460 (36.7)	175,252 (35.7)
	売上総利益 Gross Profit		16,379	17,610	16,437	17,167	12,548
電子 Electronics	売上高 Sales		115,555 (19.4)	104,454 (18.5)	109,770 (19.3)	103,382 (18.5)	83,660 (17.1)
	売上総利益 Gross Profit		10,802	11,778	12,101	14,852	13,074
ヘルスケア・他 Health Care & Others	売上高 Sales		17,560 (3.0)	15,510 (2.8)	15,835 (2.8)	12,658 (2.3)	13,146 (2.7)
	売上総利益 Gross Profit		5,336	4,682	4,883	3,253	3,665
合計 Total	売上高 Sales		596,127 (100.0)	563,222 (100.0)	568,293 (100.0)	559,372 (100.0)	490,583 (100.0)
	売上総利益 Gross Profit		52,844	53,214	55,287	55,140	46,976

地域別売上高 Sales by Area

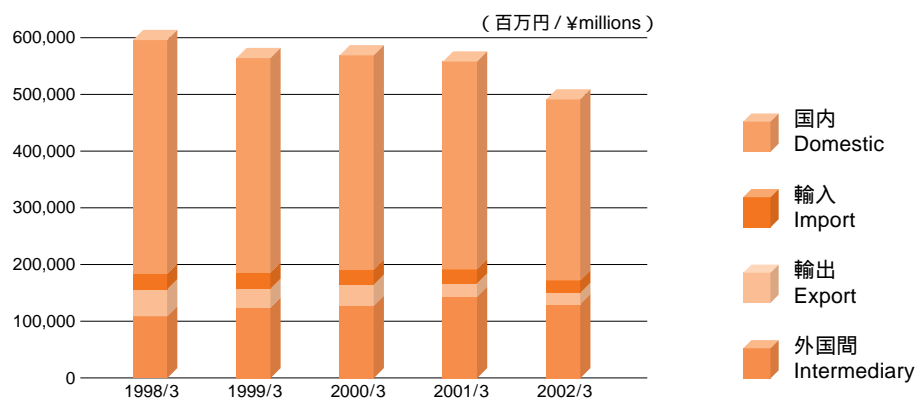


(百万円 / ¥millions / %)

		1998/3	1999/3	2000/3	2001/3	2002/3
国内	Japan	441,114 (74.0)	405,579 (72.0)	404,155 (71.1)	392,555 (70.2)	341,102 (69.5)
アジア	Asia	126,334 (21.2)	123,534 (21.9)	133,047 (23.4)	145,374 (26.0)	128,657 (26.2)
北米	North America	—	25,483 (4.5)	21,296 (3.8)	12,305 (2.2)	11,171 (2.3)
その他	Others	28,679 (4.8)	8,625 (1.6)	9,794 (1.7)	9,137 (1.6)	9,652 (2.0)
合計	Total	596,127 (100.0)	563,222 (100.0)	568,293 (100.0)	559,372 (100.0)	490,583 (100.0)

注)1998/3の北米はその他に含まれています。
Note: Others include North America in 1998/3.

形態別売上高 Sales by Type of Transaction



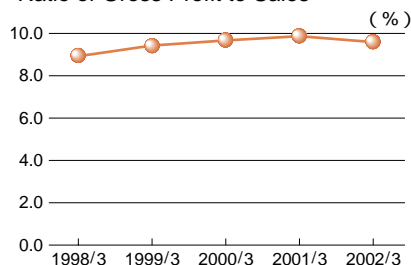
(百万円 / ¥millions / %)

		1998/3	1999/3	2000/3	2001/3	2002/3
国内	Domestic	413,285 (69.3)	379,279 (67.3)	375,895 (66.1)	368,409 (65.9)	318,251 (64.9)
輸入	Import	27,828 (4.7)	26,299 (4.7)	28,260 (5.0)	24,145 (4.3)	22,851 (4.7)
輸出	Export	46,796 (7.8)	32,395 (5.8)	36,478 (6.4)	26,299 (4.7)	19,382 (3.9)
外国間	Intermediary	108,217 (18.2)	125,247 (22.2)	127,659 (22.5)	140,518 (25.1)	130,099 (26.5)
合計	Total	596,127 (100.0)	563,222 (100.0)	568,293 (100.0)	559,372 (100.0)	490,583 (100.0)

収益性 Profitability

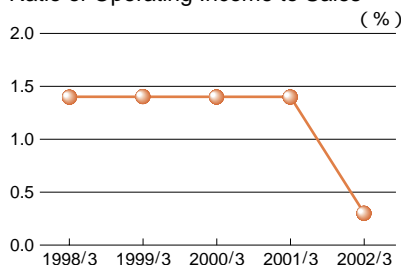
売上高総利益率

Ratio of Gross Profit to Sales



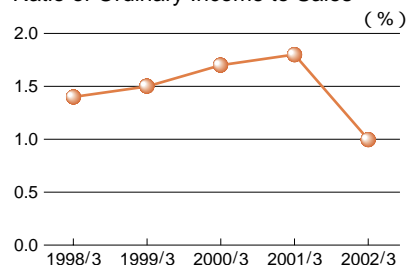
売上高営業利益率

Ratio of Operating Income to Sales



売上高経常利益率

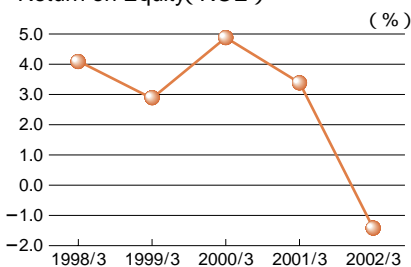
Ratio of Ordinary Income to Sales



		1998/3	1999/3	2000/3	2001/3	2002/3
売上高総利益率(%)	Ratio of Gross Profit to Sales(%)	8.9	9.4	9.7	9.9	9.6
売上高営業利益率(%)	Ratio of Operating Income to Sales(%)	1.4	1.4	1.4	1.4	0.3
売上高経常利益率(%)	Ratio of Ordinary Income to Sales(%)	1.4	1.5	1.7	1.8	1.0

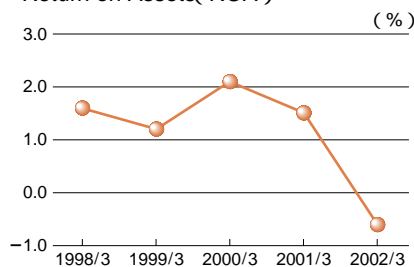
株主資本当期純利益率

Return on Equity(ROE)



総資本当期純利益率

Return on Assets(ROA)



		1998/3	1999/3	2000/3	2001/3	2002/3
株主資本当期純利益率(%)	Return on Equity(ROE) (%)	4.1	2.9	4.9	3.4	1.4
総資本当期純利益率(%)	Return on Assets(ROA) (%)	1.6	1.2	2.1	1.5	0.6

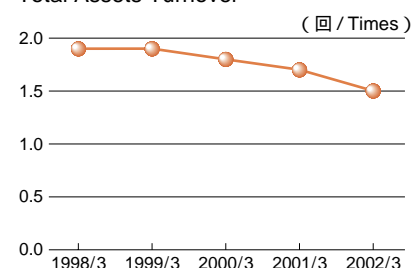
注)株主資本、総資本は期首、期末の平均値です。

Note: Values for net assets and total assets are average values at the beginning and end of the term.

効率性 Efficiency

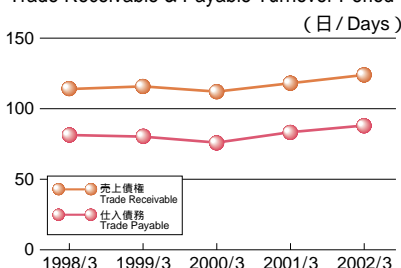
総資本回転率

Total Assets Turnover



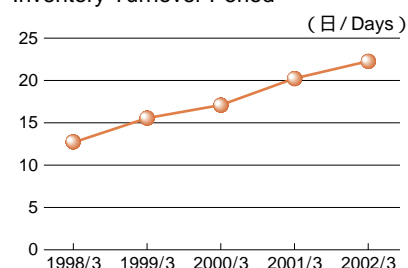
売上債権、仕入債務回転期間

Trade Receivable & Payable Turnover Period



棚卸資産回転期間

Inventory Turnover Period



		1998/3	1999/3	2000/3	2001/3	2002/3
総資本回転率(回)	Total Assets Turnover(Times)	1.9	1.9	1.8	1.7	1.5
売上債権回転期間(日)	Trade Receivable Turnover Period(Days)	114.5	116.2	112.9	118.7	124.9
仕入債務回転期間(日)	Trade Payable Turnover Period(Days)	81.0	80.1	77.6	84.1	89.3
棚卸資産回転期間(日)	Inventory Turnover Period(Days)	12.8	15.6	17.1	20.2	22.2

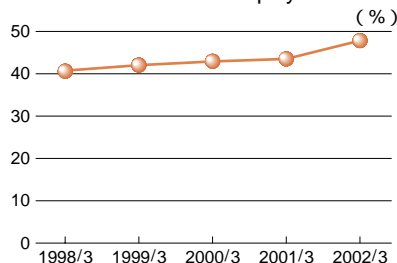
注)総資本、売上債権、仕入債務、棚卸資産は期首、期末の平均値です。

Note: Values for total assets, trade receivable, trade payable and inventory are average values at the beginning and end of the term.

安全性 Safety

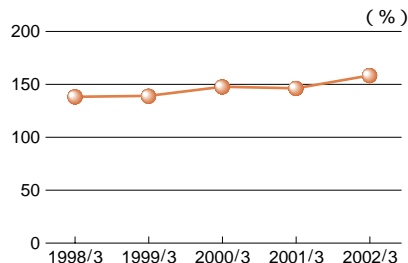
株主資本比率

Ratio of Shareholders' Equity



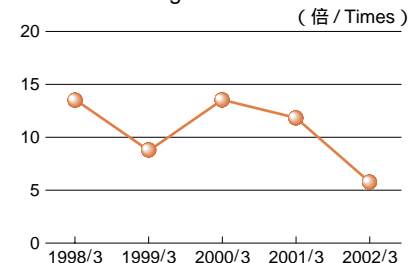
流動比率

Current Ratio



インタレスト・カバレッジ

Interest Coverage Ratio

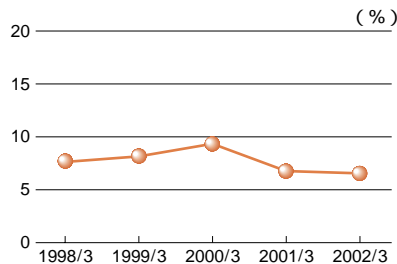


		1998/3	1999/3	2000/3	2001/3	2002/3
株主資本比率(%)	Ratio of Shareholders' Equity(%)	40.7	42.2	42.6	43.4	48.0
流動比率(%)	Current Ratio(%)	139.5	139.7	147.9	146.5	158.6
インタレスト・カバレッジ(倍)	Interest Coverage Ratio(Times)	13.5	8.9	13.5	11.9	5.8

注)インタレスト・カバレッジ=(営業利益+受取利息及び配当金)/支払利息
 Note: Interest Coverage=(Operating Income + Interest and Dividends Received)/Interest Expenses.

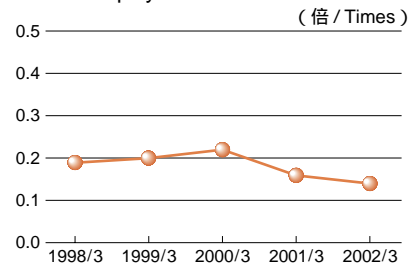
有利子負債比率

Debt to Total Assets Ratio



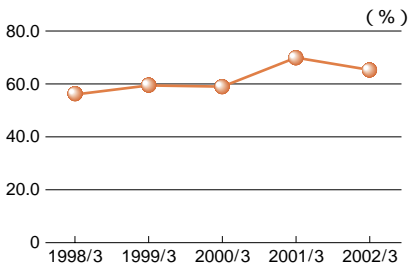
D/Eレシオ

Debt to Equity Ratio



固定比率

Fixed Assets Ratio



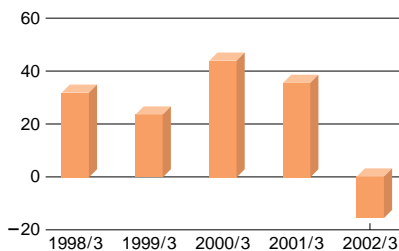
		1998/3	1999/3	2000/3	2001/3	2002/3
有利子負債比率(%)	Debt to Total Assets Ratio(%)	7.8	8.3	9.4	6.8	6.6
D/Eレシオ(倍)	Debt to Equity Ratio(Times)	0.19	0.20	0.22	0.16	0.14
固定比率(%)	Fixed Assets Ratio(%)	57.2	59.7	59.5	70.0	65.2

注)有利子負債比率=有利子負債/総資本
 注)D/Eレシオ=有利子負債/株主資本
 Note: Debt to Total Assets Ratio=(Loans Payable + CP + Bond)/Total Assets.
 Note: D/E Ratio=(Loans Payable + CP + Bond)/Shareholders' Equity.

投資指標 Per Share Data

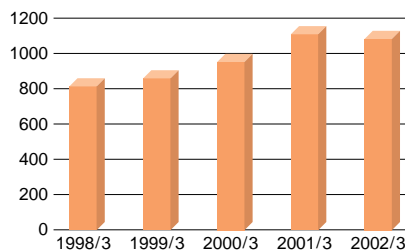
一株当たり当期純利益

Earnings per Share(EPS)



一株当たり純資産

Book Value per Share(BPS)

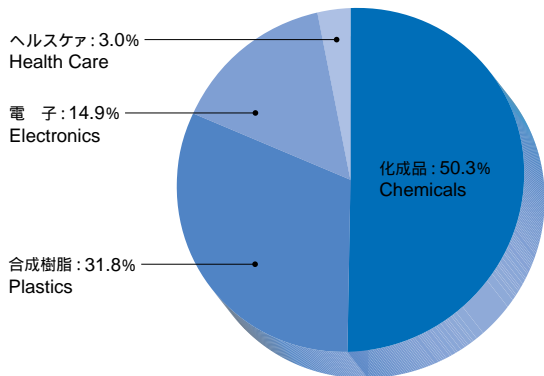


		1998/3	1999/3	2000/3	2001/3	2002/3
一株当たり当期純利益(円)	Earnings per Share(¥)	32.39	23.76	44.25	35.28	15.39
一株当たり純資産(円)	Book Value per Share(¥)	809.17	862.06	952.67	1,104.81	1,082.16

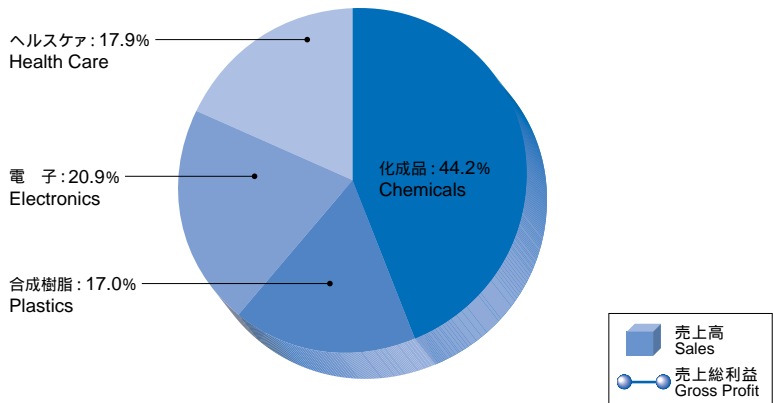
事業別売上高及び売上総利益 Sales & Gross Profit by Business Group

売上高と売上総利益の構成比 Sales & Gross Profit Composition by Business Group (2002/3)

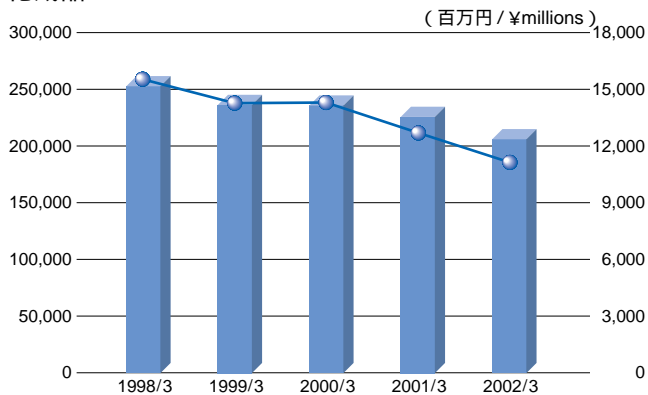
売上高 Sales



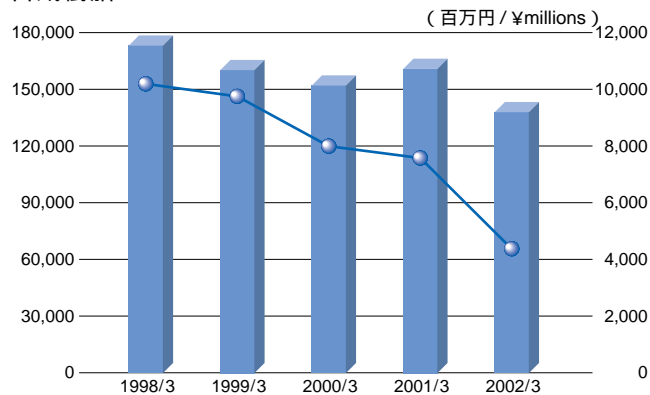
売上総利益 Gross Profit



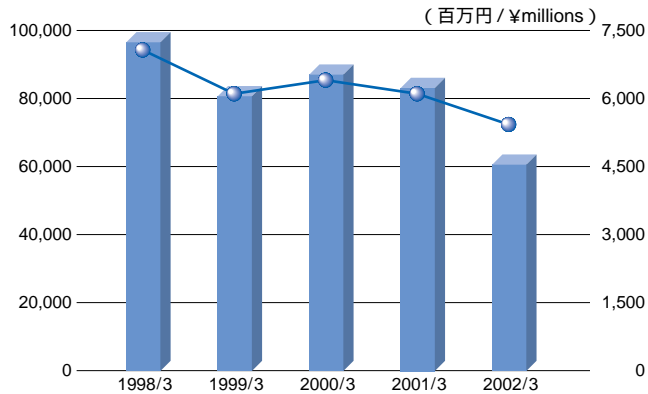
化成品 Chemicals



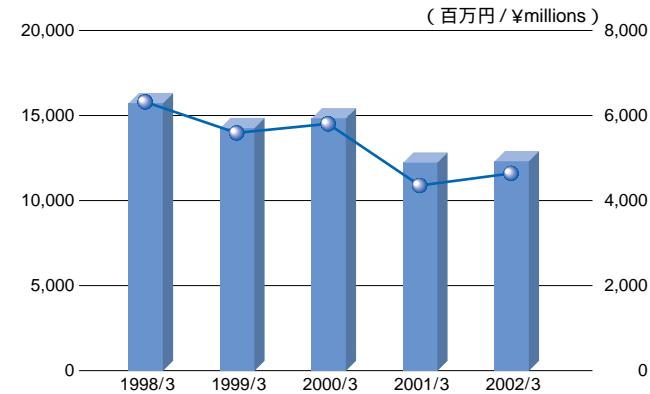
合成樹脂 Plastics



電子 Electronics



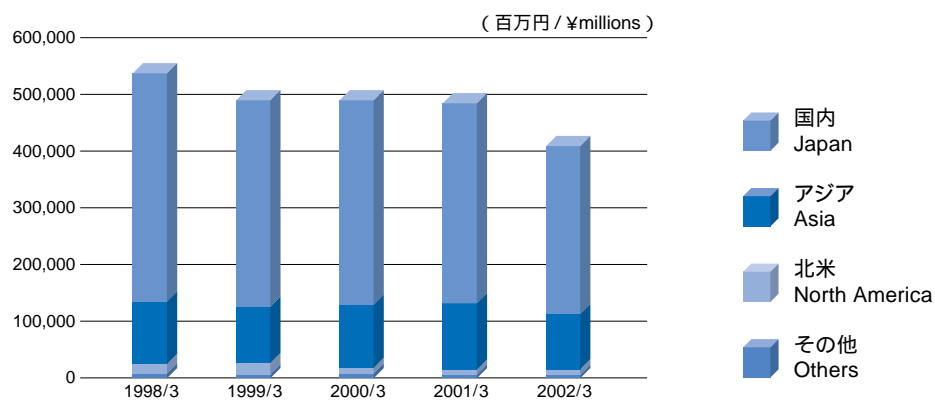
ヘルスケア Health Care



(百万円/¥millions / %)

			1998/3	1999/3	2000/3	2001/3	2002/3
化成品 Chemicals	売上高 Sales		252,610 (46.9)	235,277 (47.9)	235,381 (48.1)	225,050 (46.8)	205,299 (50.3)
	売上総利益 Gross Profit		15,527	14,241	14,249	12,718	11,534
合成樹脂 Plastics	売上高 Sales		173,791 (32.3)	160,341 (32.7)	152,069 (31.1)	161,208 (33.5)	129,810 (31.8)
	売上総利益 Gross Profit		10,213	9,756	8,004	7,540	4,435
電子 Electronics	売上高 Sales		96,604 (17.9)	80,770 (16.5)	87,296 (17.8)	82,828 (17.2)	60,507 (14.9)
	売上総利益 Gross Profit		7,119	6,167	6,407	6,163	5,446
ヘルスケア Health Care	売上高 Sales		15,749 (2.9)	14,283 (2.9)	14,891 (3.0)	12,207 (2.5)	12,333 (3.0)
	売上総利益 Gross Profit		6,343	5,649	5,834	4,380	4,663
合計 Total	売上高 Sales		538,756 (100.0)	490,672 (100.0)	489,639 (100.0)	481,294 (100.0)	407,950 (100.0)
	売上総利益 Gross Profit		39,203	35,815	34,496	30,803	26,079

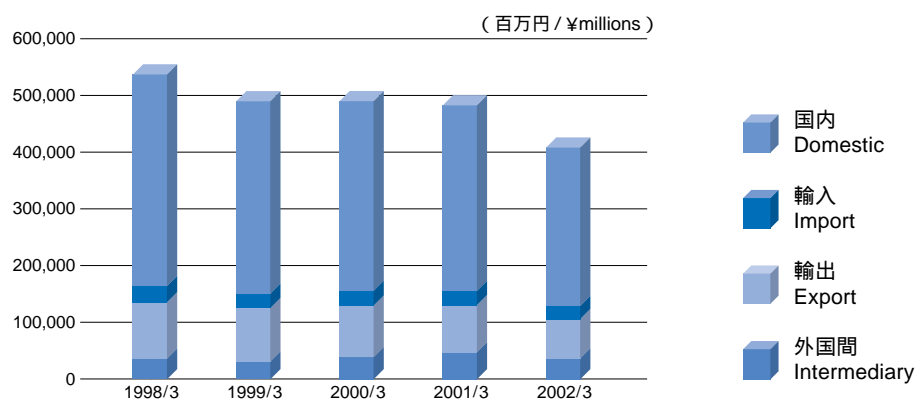
地域別売上高 Sales by Area



(百万円 / ¥millions / %)

		1998/3	1999/3	2000/3	2001/3	2002/3
国内	Japan	402,880 (74.8)	365,000 (74.3)	360,875 (73.7)	350,651 (72.9)	302,002 (74.0)
アジア	Asia	111,689 (20.7)	99,926 (20.4)	110,288 (22.5)	113,802 (23.6)	90,998 (22.3)
北米	North America	15,761 (2.9)	17,524 (3.6)	11,092 (2.3)	10,331 (2.1)	8,365 (2.1)
その他	Others	8,425 (1.6)	8,219 (1.7)	7,383 (1.5)	6,509 (1.4)	6,583 (1.6)
合計	Total	538,756 (100.0)	490,672 (100.0)	489,639 (100.0)	481,294 (100.0)	407,950 (100.0)

形態別売上高 Sales by Type of Transaction



(百万円 / ¥millions / %)

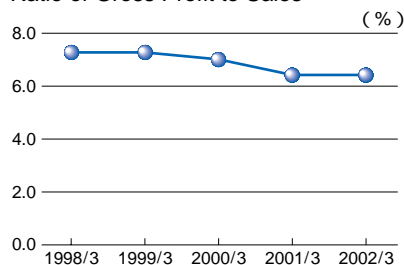
		1998/3	1999/3	2000/3	2001/3	2002/3
国内	Domestic	375,535 (69.7)	339,281 (69.2)	333,215 (68.1)	327,261 (68.0)	279,978 (68.6)
輸入	Import	27,344 (5.1)	25,719 (5.2)	27,659 (5.6)	23,390 (4.9)	22,023 (5.4)
輸出	Export	98,041 (18.2)	92,248 (18.8)	89,149 (18.2)	82,958 (17.2)	67,303 (16.5)
外国間	Intermediary	37,834 (7.0)	33,423 (6.8)	39,614 (8.1)	47,684 (9.9)	38,644 (9.5)
合計	Total	538,756 (100.0)	490,672 (100.0)	489,639 (100.0)	481,294 (100.0)	407,950 (100.0)

注)1998/3より区分を変更しております。
Note: Category was changed in 1998/3.

収益性 Profitability

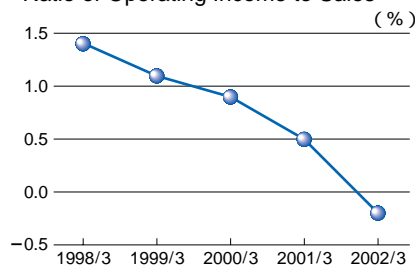
売上高総利益率

Ratio of Gross Profit to Sales



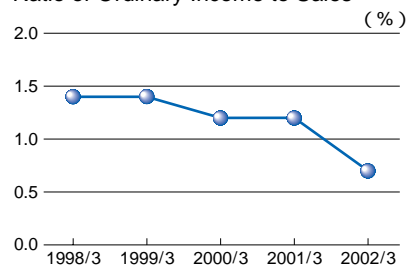
売上高営業利益率

Ratio of Operating Income to Sales



売上高経常利益率

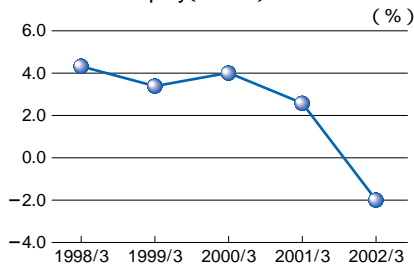
Ratio of Ordinary Income to Sales



		1998/3	1999/3	2000/3	2001/3	2002/3
売上高総利益率(%)	Ratio of Gross Profit to Sales(%)	7.3	7.3	7.0	6.4	6.4
売上高営業利益率(%)	Ratio of Operating Income to Sales(%)	1.4	1.1	0.9	0.5	0.2
売上高経常利益率(%)	Ratio of Ordinary Income to Sales(%)	1.4	1.4	1.2	1.2	0.7

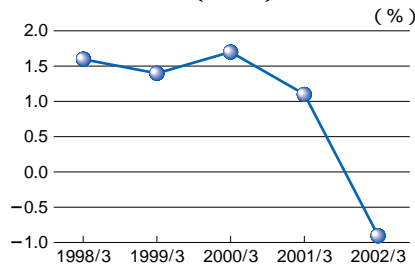
株主資本当期純利益率

Return on Equity(ROE)



総資本当期純利益率

Return on Assets(ROA)



		1998/3	1999/3	2000/3	2001/3	2002/3
株主資本当期純利益率(%)	Return on Equity(ROE) (%)	4.3	3.4	4.0	2.6	2.0
総資本当期純利益率(%)	Return on Assets(ROA) (%)	1.6	1.4	1.7	1.1	0.9

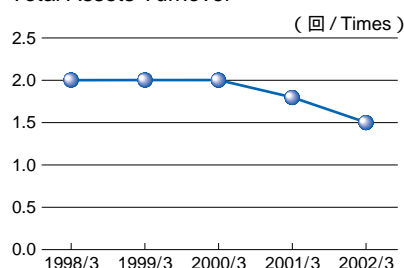
注)株主資本、総資本は期首、期末の平均値です。

Note: Values for net assets and total assets are average values at the beginning and end of the term.

効率性 Efficiency

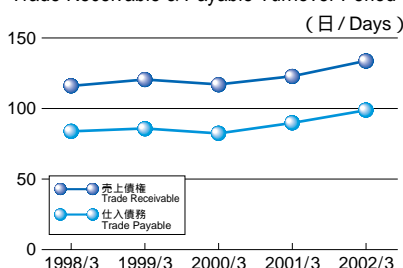
総資本回転率

Total Assets Turnover



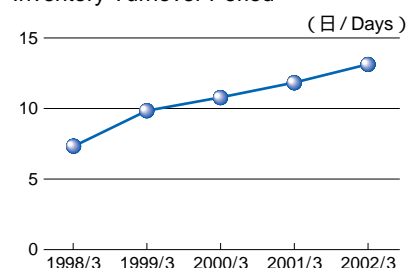
売上債権、仕入債務回転期間

Trade Receivable & Payable Turnover Period



棚卸資産回転期間

Inventory Turnover Period



		1998/3	1999/3	2000/3	2001/3	2002/3
総資本回転率(回)	Total Assets Turnover(Times)	2.0	2.0	2.0	1.8	1.5
売上債権回転期間(日)	Trade Receivable Turnover Period(Days)	116.3	120.7	117.4	123.8	134.3
仕入債務回転期間(日)	Trade Payable Turnover Period(Days)	84.5	85.9	82.8	90.1	99.3
棚卸資産回転期間(日)	Inventory Turnover Period(Days)	7.4	9.9	10.8	11.9	13.1

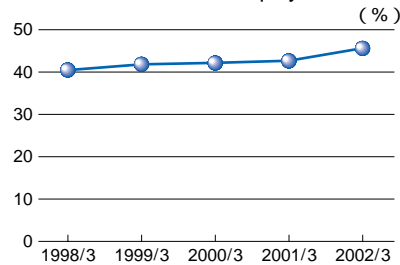
注)総資本、売上債権、仕入債務、棚卸資産は期首、期末の平均値です。

Note: Values for total assets, trade receivable, trade payable and inventory are average values at the beginning and end of the term.

安全性 Safety

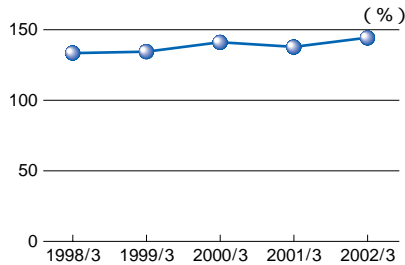
株主資本比率

Ratio of Shareholders' Equity



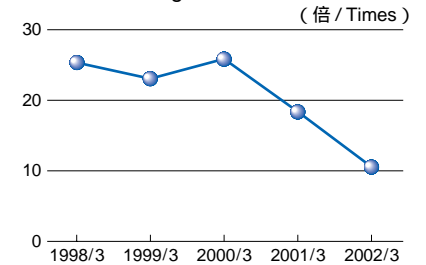
流動比率

Current Ratio



インタレスト・カバレッジ

Interest Coverage Ratio

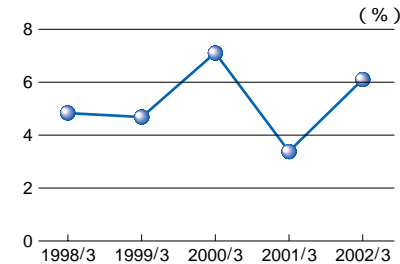


		1998/3	1999/3	2000/3	2001/3	2002/3
株主資本比率(%)	Ratio of Shareholders' Equity(%)	40.6	42.3	42.4	42.8	45.5
流動比率(%)	Current Ratio(%)	133.7	134.2	141.3	138.6	144.5
インタレスト・カバレッジ(倍)	Interest Coverage Ratio(Times)	25.5	23.1	25.8	18.2	10.5

注)インタレスト・カバレッジ=(営業利益+受取利息及び配当金)/支払利息
 Note: Interest Coverage=(Operating Income + Interest and Dividends Received)/Interest Expenses.

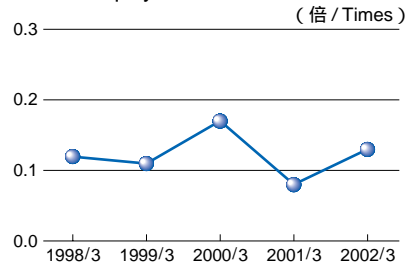
有利子負債比率

Debt to Total Assets Ratio



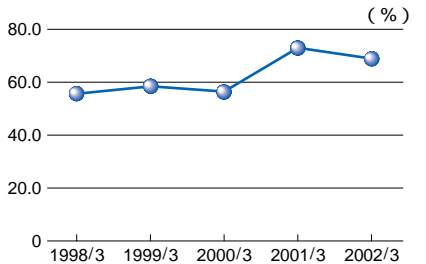
D/Eレシオ

Debt to Equity Ratio



固定比率

Fixed Assets Ratio



		1998/3	1999/3	2000/3	2001/3	2002/3
有利子負債比率(%)	Debt to Total Assets Ratio(%)	4.8	4.7	7.1	3.4	6.1
D/Eレシオ(倍)	Debt to Equity Ratio(Times)	0.12	0.11	0.17	0.08	0.13
固定比率(%)	Fixed Assets Ratio(%)	56.0	58.0	56.6	72.8	68.8

注)有利子負債比率=有利子負債/総資本
 注)D/Eレシオ=有利子負債/株主資本
 Note: Debt to Total Assets Ratio=(Loans Payable + CP + Bond)/Total Assets.
 Note: D/E Ratio=(Loans Payable + CP + Bond)/Shareholders' Equity.

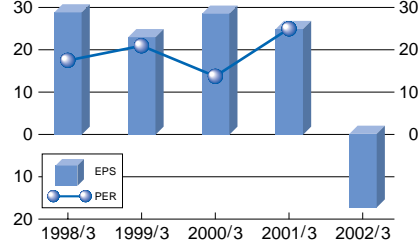
投資指標 Per Share Data

一株当たり当期純利益

Earnings per Share(EPS)

株価収益率

Price Earnings Ratio(PER)

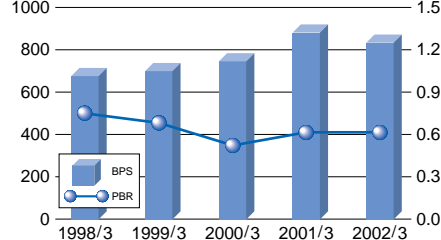


一株当たり純資産

Book Value per Share(BPS)

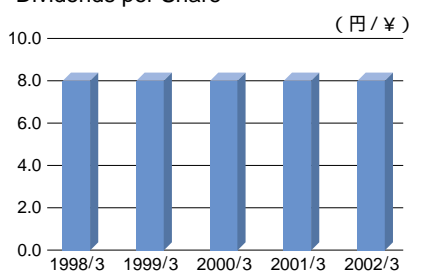
株価純資産倍率

Price Book Value Ratio(PBR)



一株当たり配当金

Dividends per Share



		1998/3	1999/3	2000/3	2001/3	2002/3
一株当たり当期純利益(円)	Earnings per Share(¥)	28.80	23.11	28.65	21.42	17.33
株価収益率(倍)	Price Earnings Ratio(Times)	17.67	20.99	13.79	24.98	—
一株当たり純資産(円)	Book Value per Share(¥)	674.87	698.47	748.66	877.88	835.77
株価純資産倍率(倍)	Price Book Value Ratio(Times)	0.75	0.69	0.53	0.61	0.61
一株当たり配当金(円)	Dividends per Share(¥)	8.0	8.0	8.0	8.0	8.0

貸借対照表
Balance Sheet

(百万円 / ¥millions)

	2001/3	2002/3
資産の部 Assets		
流動資産 Current assets	246,268	206,062
1.現金及び預金 Cash and time deposits	21,403	23,297
2.受取手形及び売掛金 Notes and accounts receivable	184,493	151,202
3.たな卸資産 Inventories	34,179	25,545
4.繰延税金資産 Deferred income taxes	1,885	2,386
5.その他 Others	5,484	5,208
貸倒引当金 Less allowance for doubtful receivables	1,179	1,579
固定資産 Fixed assets	107,508	94,011
1.有形固定資産 Property, plant and equipment	24,730	25,228
(1)建物及び構築物 Buildings and structures	(10,666)	(10,598)
(2)機械装置及び運搬具 Machinery, equipment and vehicles	(4,154)	(3,474)
(3)土地 Land	(7,968)	(9,545)
(4)その他 Others	(1,941)	(1,610)
2.無形固定資産 Intangible fixed assets	1,229	1,202
3.投資その他の資産 Investments and other assets	81,548	67,579
(1)投資有価証券 Investments in securities	(76,309)	(63,072)
(2)長期貸付金 Long-term loans receivable	(315)	(424)
(3)繰延税金資産 Deferred income taxes	(748)	(434)
(4)その他 Others	(4,688)	(3,775)
貸倒引当金 Less allowance for doubtful accounts	(512)	(126)
資産合計 Total assets	353,776	300,073

	2001/3	2002/3
負債の部 Liabilities		
流動負債 Current liabilities	168,142	129,966
1.支払手形及び買掛金 Notes and accounts payable	134,337	105,599
2.短期借入金 Short-term loans	14,002	6,732
3.未払法人税等 Accrued income taxes	4,615	563
4.繰延税金負債 Deferred income taxes	—	12
5.その他 Others	15,187	17,059
固定負債 Fixed liabilities	28,252	22,188
1.社債 Bond	7,000	7,000
2.長期借入金 Long-term debt	2,876	2,945
3.繰延税金負債 Deferred tax liabilities	7,846	2,014
4.退職給付引当金 Accrued retirement benefits for employees	9,231	9,266
5.役員退職慰労引当金 Accrued retirement benefits for officers	1,261	929
6.その他 Others	36	32
負債合計 Total liabilities	196,395	152,155
少数株主持分 Minority interests		
少数株主持分 Minority interests	3,882	3,741
資本の部 Shareholders' equity		
資本金 Common stock	9,699	9,699
資本準備金 Additional paid-in capital	9,634	9,634
連結剰余金 Retained earnings	118,336	114,870
その他有価証券評価差額金 Unrealized holding gain on securities	16,210	11,690
為替換算調整勘定 Translation adjustments	383	963
自己株式 Less treasury stock, at cost	0	2,682
資本合計 Total shareholders' equity	153,498	144,176
負債、少数株主持分及び資本合計 Total liabilities, minority interests and shareholders' equity	353,776	300,073

損益及び剰余金結合計算書 (百万円 / ¥millions)
Income Statement & Surplus Statement

	2001/3	2002/3
売上高 Net sales	559,372	490,583
売上原価 Cost of sales	504,232	443,607
売上総利益 Gross profit	55,140	46,976
販売費及び一般管理費 Selling, general and administrative expenses	47,388	45,302
営業利益 Operating income	7,752	1,673
営業外収益 Non-operating income	4,641	5,213
1. 受取利息 Interests income	(786)	(610)
2. 受取配当金 Dividends income	(1,172)	(1,338)
3. 収入賃貸料 Rent income	(544)	(639)
4. その他 Others	(2,137)	(2,625)
営業外費用 Non-operating expenses	2,111	2,147
1. 支払利息 Interest expenses	(815)	(623)
2. その他 Others	(1,295)	(1,523)
経常利益 Ordinary income	10,282	4,739
特別利益 Extraordinary gains	7,363	1,150
1. 固定資産売却益 Gains on sales of property and equipment	(1,519)	(37)
2. 投資有価証券売却益 Gains on sales of investments in securities	(3,971)	(1,112)
3. 退職給付信託設定益 Gains on marketable securities contributed to employees' retirement benefit trust	(1,870)	(一)
4. 前期損益修正益 Prior-term adjustment	(2)	(一)
特別損失 Extraordinary losses	8,293	8,839
1. 投資有価証券評価損 Loss on revaluation of investments in securities	(一)	(6,720)
2. 特別退職金 Special retirement allowance	(724)	(1,703)
3. 関係会社整理損 Loss on liquidation of subsidiaries	(281)	(45)
4. 退職給付会計基準変更時差異 Amortization of net retirement benefit obligation at transition	(6,984)	(一)
5. その他 Others	(303)	(369)
税金等調整前当期純利益又は税金等調整前当期純損失() Income or loss before income taxes and minority interests	9,352	2,949
法人税、住民税及び事業税 Income taxes	6,527	1,758
法人税等調整額 Deferred taxes	2,506	2,807
少数株主利益 Minority interests	385	197
当期純利益又は当期純損失() Net income or loss	4,945	2,097
連結剰余金期首残高 Consolidated surplus at the beginning of the year	115,503	118,336
連結剰余金増加高 Increase of consolidated surplus	338	86
1. 連結子会社合併に伴う調整額 Adjustment in retained earnings resulting from merger of consolidated subsidiaries	(一)	(86)
2. 連結子会社合併に伴う増加高 Increase in retained earnings resulting from merger of unconsolidated subsidiaries	(338)	(一)
連結剰余金減少高 Decrease of consolidated surplus	2,451	1,454
1. 配当金 Cash dividends	(1,132)	(1,111)
2. 役員賞与 Bonuses to officers	(62)	(54)
3. 自己株式消却額 Retirement of treasury stock	(1,256)	(266)
4. 連結除外に伴う減少高 Decrease in retained earnings resulting from exclusion of consolidated subsidiaries	(一)	(23)
連結剰余金期末残高 Consolidated surplus at the end of the year	118,336	114,870

キャッシュ・フロー計算書 (百万円 / ¥millions)
Cash Flow Statement

	2001/3	2002/3
営業活動によるキャッシュ・フロー Operating activities		
税金等調整前当期純利益又は税金等調整前当期純損失() Net income or loss before income taxes and minority interests	9,352	2,949
減価償却費 Depreciation and amortization	2,966	2,888
退職給与引当金の減少額 Decrease in retirement benefits	4,690	—
退職給付引当金の増加額 Increase in retirement benefits	9,231	247
受取利息及び受取配当金 Interest and dividends received	1,959	1,948
有形固定資産売却損益 Gain (loss) on sales of property and equipment	1,478	15
売上債権の増減額(は増加) Increase (decrease) in notes and accounts receivable	2,341	33,112
たな卸資産の増減額(は増加) Increase (decrease) in inventories	5,780	5,974
仕入債務の増減額(は減少) Increase (decrease) in notes and accounts payable	7,118	28,287
投資有価証券売却損益 Gain on sales of investment securities	3,802	1,075
有価証券の評価替 Loss on devaluation of investments in securities	124	6,720
その他 Others	1,896	3,033
小計 Sub total	10,636	17,731
利息及び配当金の受取額 Interest and dividends received by cash	1,985	2,172
利息の支払額 Interest paid	822	619
法人税等の支払額 Taxes paid	3,633	6,932
営業活動によるキャッシュ・フロー Net cash provided by (used in) operating activities	8,165	12,351
投資活動によるキャッシュ・フロー Investing activities		
有形固定資産の取得による支出 Purchases of property and equipment	3,593	3,993
有形固定資産の売却による収入 Proceeds from sales of property and equipment	2,045	156
投資有価証券の取得による支出 Purchases of investments in securities	5,184	1,858
投資有価証券の売却による収入 Proceeds from sales of investments in securities	6,119	1,800
連結範囲の変更を伴う子会社株式の取得による支出 Payment for subsidiary purchases of stock, net of cash acquired	2,895	—
その他 Others	654	2,593
投資活動によるキャッシュ・フロー Net cash provided by (used in) investing activities	4,162	1,300
財務活動によるキャッシュ・フロー Financing activities		
短期借入金の純増減額(は減少) Decrease in short-term loans, net	6,830	4,735
長期借入による収入 Proceeds from long-term debt	1,185	1,534
長期借入金の返済による支出 Repayment of long-term debt	270	1,101
自己株式の取得による支出 Purchases of treasury stock	1,256	2,948
配当金の支払額 Cash Dividends paid	1,132	1,111
その他 Others	3	253
財務活動によるキャッシュ・フロー Net cash provided by (used in) financing activities	8,306	8,615
現金及び現金同等物に係る換算差額 Effect of exchange rate changes on cash and cash equivalents	1,072	1,318
現金及び現金同等物の増減額 Net increase(decrease) in cash and cash equivalents	3,231	3,753
現金及び現金同等物の期首残高 Cash and cash equivalents at the beginning of the year	21,015	18,465
連結子会社合併に伴う現金及び現金同等物の調整額 Adjustment in cash and cash equivalents arising from merger of consolidated subsidiaries	—	110
連結除外に伴う現金及び現金同等物の減少額 Decrease in cash and cash equivalents resulting from exclusion of consolidated subsidiaries	—	368
連結子会社合併に伴う現金及び現金同等物の増加額 Increase in cash and cash equivalents arising from merger of unconsolidated subsidiaries	680	—
現金及び現金同等物の期末残高 Cash and cash equivalents at the end of the year	18,465	21,960

貸借対照表
Balance Sheet

(百万円 / ¥millions)

	2001/3	2002/3
資産の部 Assets		
流動資産 Current assets	195,982	168,343
1.現金及び預金 Cash and time deposits	7,055	13,198
2.受取手形 Notes receivable	34,536	21,439
3.売掛金 Accounts receivable	131,333	112,892
4.自己株式 Treasury stock	0	—
5.商品 Inventories	16,861	12,340
6.前渡金 Advance payment	212	176
7.繰延税金資産 Deferred tax assets	1,207	1,775
8.短期貸付金 Short-term loans receivable	2,437	4,206
9.その他 Others	3,096	3,292
貸倒引当金 Less allowance for doubtful receivables	758	977
固定資産 Fixed assets	88,789	76,572
1.有形固定資産 Property, plant and equipment	8,525	10,070
(1)建物 Buildings	(4,090)	(4,241)
(2)構築物 Structures	(219)	(251)
(3)機械装置 Machinery and equipment	(240)	(224)
(4)車両運搬具 Vehicles	(2)	(1)
(5)工具器具備品 Tools, furniture and fixtures	(847)	(653)
(6)土地 Land	(3,125)	(4,698)
2.無形固定資産 Intangible fixed assets	66	56
3.投資その他の資産 Investments and other assets	80,198	66,446
(1)投資有価証券 Investments in securities	(63,210)	(49,889)
(2)関係会社株式 Investment in subsidiaries	(13,878)	(14,067)
(3)関係会社出資金 Other investment in subsidiaries	(130)	(423)
(4)関係会社長期貸付金 Long-term loans receivable in subsidiaries	(364)	(155)
(5)その他 Others	(3,072)	(2,143)
貸倒引当金 Less allowance for doubtful accounts	(457)	(232)
資産合計 Total assets	284,772	244,916

	2001/3	2002/3
負債の部 Liabilities		
流動負債 Current liabilities	141,352	116,476
1.支払手形 Notes payable	5,998	4,655
2.買掛金 Accounts payable	118,875	92,514
3.短期借入金 Short-term loans payable	2,173	2,888
4.コマーシャルペーパー Commercial paper	—	3,000
5.未払金 Accrued payment	1,629	1,372
6.未払費用 Accrued expenses	3,006	2,462
7.未払法人税等 Accrued income taxes	2,927	9
8.前受金 Advance received	213	135
9.預り金 Deposits received	3,220	6,157
10.前受収益 Deferred income	20	58
11.その他 Others	3,284	3,221
固定負債 Fixed liabilities	21,449	17,089
1.社債 Bond	7,000	7,000
2.長期借入金 Long-term debt	500	1,980
3.繰延税金負債 Deferred income taxes	7,494	1,350
4.退職給付引当金 Accrued retirement benefits for employees	5,706	6,053
5.役員退職慰労引当金 Accrued retirement benefits for officers	748	705
負債合計 Total liabilities	162,801	133,566
資本の部 Shareholders' equity		
資本金 Common stock	9,699	9,699
資本準備金 Additional paid-in capital	9,634	9,634
利益準備金 Legal reserve	2,424	2,424
その他の剰余金 Retained earnings	84,769	80,980
1.特別償却準備金 Reserve for special depreciation	65	106
2.圧縮記帳積立金 Reserve for advanced depreciation	15	708
3.別途積立金 Other reserves	78,510	79,510
4.当期末処分利益 Unappropriated retained earnings	6,178	655
その他有価証券評価差額金 Unrealized holding gain on securities	15,441	11,292
自己株式 Less treasury stock, at cost	—	2,682
資本合計 Total shareholders' equity	121,970	111,350
負債及び資本合計 Total liabilities and shareholders' equity	284,772	244,916

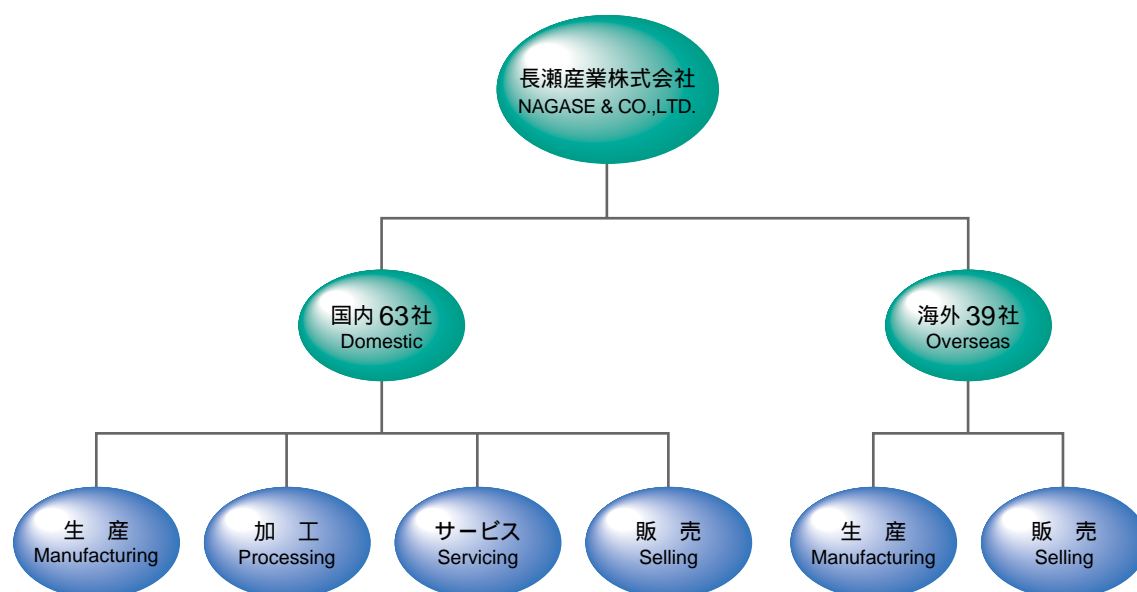
損益計算書

(百万円 / ¥millions)

Income Statement

	2001/3	2002/3
売上高 Net sales	481,294	407,950
売上原価 Cost of sales	450,491	381,870
売上総利益 Gross profit	30,803	26,079
販売費及び一般管理費 Selling, general and administrative expenses	28,522	26,985
営業利益又は営業損失() Operating income or loss	2,280	905
営業外収益 Non-operating income	4,709	4,626
1. 受取利息 Interests income	(563)	(404)
2. 受取配当金 Dividends income	(2,606)	(2,414)
3. 収入賃借料 Rent income	(668)	(762)
4. その他 Others	(870)	(1,043)
営業外費用 Non-operating expenses	1,291	959
1. 支払利息 Interest expenses	(300)	(182)
2. 有価証券評価損 Loss on revaluation of marketable securities	(238)	(—)
3. その他 Others	(752)	(777)
経常利益 Ordinary income	5,697	2,761
特別利益 Extraordinary gains	7,422	262
1. 固定資産売却益 Gains on disposal of property and equipment	(1,511)	(23)
2. 投資有価証券・関係会社株式売却益 Gains on sales of investments in securities	(4,039)	(239)
3. 退職給付信託設定益 Gains on marketable securities contributed to employees' retirement benefit trust	(1,870)	(—)
4. 前期損益修正益 Prior-term adjustment	(1)	(—)
特別損失 Extraordinary losses	8,330	8,547
1. 投資有価証券・関係会社株式評価額 Loss on revaluation of investments in securities	(—)	(6,722)
2. 特別退職金 Special retirement allowance	(724)	(1,586)
3. 関係会社整理損 Loss on liquidation of subsidiaries	(537)	(45)
4. 退職給付会計基準変更時差異 Amortization of net retirement benefit obligation at transition	(6,984)	(—)
5. その他 Others	(83)	(192)
税引前当期純利益又は税引前当期純損失() Income or loss before income taxes	4,790	5,523
法人税、住民税及び事業税 Income taxes	4,024	539
法人税等調整額 Deferred taxes	2,238	3,700
当期純利益又は当期純損失() Net income or loss	3,004	2,361
前期繰越利益 Balance carried forward from the previous year	4,430	3,283
自己株式消却額 Retirement of treasury stock	1,256	266
当期末処分利益 Unappropriated retained earnings	6,178	655

グループ会社の状況 Performance of Group Companies



連結対象会社(26社) Consolidated Companies

国内会社 Domestic

(平成14年3月末時点 / For the years ended March 31, 2002)

販売及びサービス Selling and Servicing

社名 Company	資本金又は出資金 Capital stock (百万円 / ¥millions)	設立時期 Foundation	議決権の所有割合 (%) Shares of having resolution	事業内容 Business lines
報映産業(株) Hoei Sangyo Co., Ltd.	250	1974/04	67.40	情報や映像を記録する各種メディア及び情報や映像を記録、 圧縮、加工する各種機器とシステムの販売 Sale of various recording media for information and image and various device and system for recording, compression and processing of information & image
ナガセプラスチック販売(株) Nagase Plastics Co., Ltd.	96	1975/03	100.00	プラスチック包装資材及び工業品、成型品、接着品、 プラスチック原料、各種機械の販売 Sale of plastic packaging material, industrial products, molded products, adhesives, plastic raw material and other various machine, etc.
長瀬カラーケミカル(株) Nagase Color & Chemicals Co., Ltd.	100	2000/04	100.00	染料、化学工業薬品などの仕入販売及び情報提供サービス Sale and information-providing service of dystuffs, industrial chemicals
ナガセエレックス(株) Nagase Elex Co., Ltd.	20	1979/02	100.00	合成樹脂製品及びその原料の販売 Sale of plastics and plastic raw material
デルタファインケミカル(株) Delta Fine Chemical Co., Ltd.	30	1995/09	100.00	塗料原料、染料、化成品等の販売 Sale of dystuffs, coating intermediates, plastics, and chemicals
ナガセ研磨機材(株) Nagase Barrel Finishing Systems Co., Ltd.	50	1955/10	100.00	研磨材、研磨機械の販売 Sale of abrasive and inorganic materials
ナガセ生化学品販売(株) Nagase Biochemical Sales Co., Ltd.	30	1987/04	100.00 (13.00)	酵素製剤、食品添加物および飼料添加物の販売 Sale of enzymes and food and feed additives
ナガセ物流(株) Nagase Storage & Distribution Co., Ltd.	401	1982/04	100.00	倉庫業 Warehousing
静岡長瀬(株) Shizuoka Nagase Co., Ltd.	30	1972/04	100.00	染料、工業薬品の販売 Sale of dyestuffs, pigments, and chemicals for paper

生産及び加工 Manufacturing and Processing				
社名 Company	資本金又は出資金 Capital stock (百万円/¥millions)	設立時期 Foundation	議決権の所有割合(%) Shares of having resolution	事業内容 Business lines
ナガセケムテックス(株) Nagase ChemteX Ltd.	2,420	1970/04	100.00	熱硬化性樹脂、医薬品、動物用医薬品、医薬部外品、化粧品、一般化学工業製品、中間体、酵素製剤、食品添加物、飼料添加物の製造販売 Manufacturing and selling of thermosetting resin, pharmaceutical, drug for animal, medical care products, cosmetics, industrial chemical products, intermediates, enzymes, food and feed additives
東拓工業(株) Totaku Industries, Inc.	270	1952/05	76.25	合成樹脂等をもとにした産業用、家庭用ホース、フレキシブルパイプ等の製造販売 Manufacturing and selling of plastic-based industrial and home-use hose, flexible pipe, etc.
セツナン化成(株) Setsunan Kasei Co., Ltd.	105	1966/02	100.00	合成樹脂の着色・加工 Manufacture of plastic coloring compounds
ナガセ電子機器サービス(株) Nagase Electronic Equipment Service Co., Ltd.	45	1989/06	100.00	半導体機器等の販売及びメンテナンス Maintenance services for cryopumps and vacuum equipment
寿化成工業(株) Kotobuki Industries Co., Ltd.	20	1972/11	85.00 (42.50)	合成樹脂製品の成型、加工 Manufacture of plastic products

海外会社 Overseas

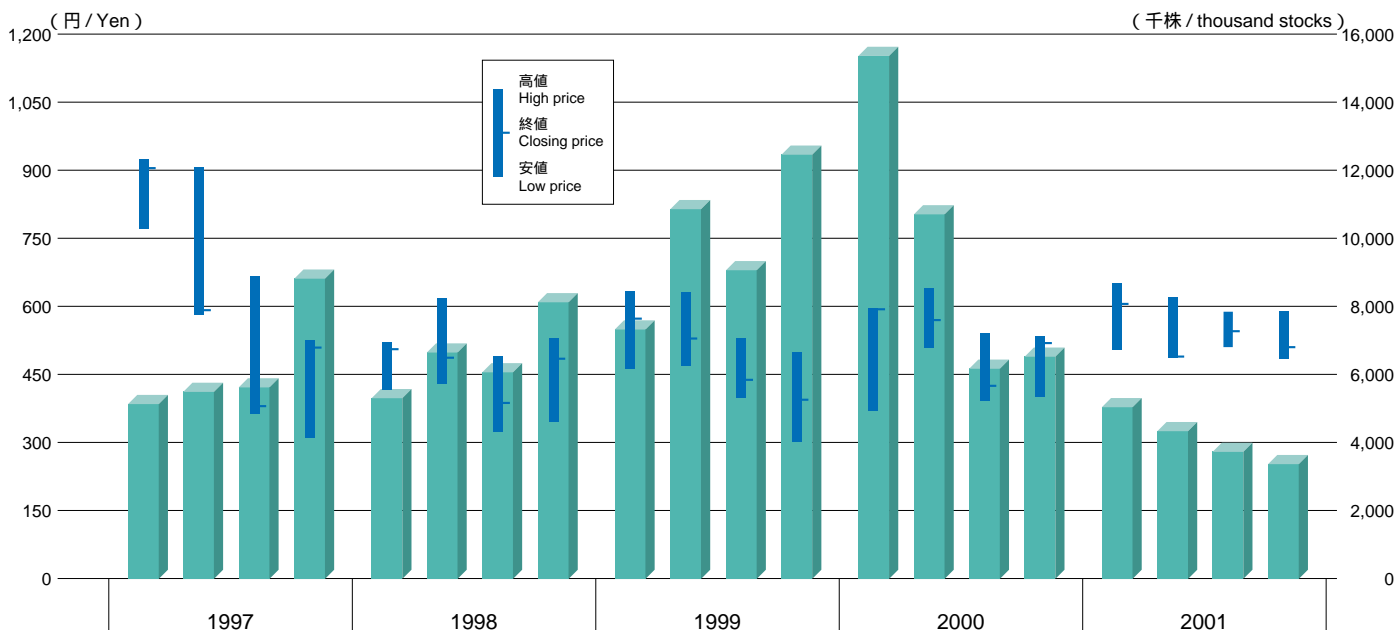
社名 Company	資本金又は出資金 Capital stock (千通貨/ thousands)	設立時期 Foundation	議決権の所有割合(%) Shares of having resolution	事業内容 Business lines
ナガセシンガポールリミテッド Nagase Singapore(Pte)Ltd.	S\$2,700	1975/04	100.00	輸出入、仲介貿易、市場開発、情報収集 Import & export, trading, market development, information gathering
ナガセアメリカコーポレーション Nagase America Corp.	US\$1,000	2002/01	(100.00)	化成品、電子材料の輸出・輸入および販売 Import & export, sale of chemicals and electronic industry materials
長瀬(香港)有限公司 Nagase(Hong Kong)Ltd.	HK\$3,120	1971/02	100.00	輸出入、仲介貿易、市場開発、情報収集 Import & export, trading, market development, information gathering
ナガセヨーロッパゲーエンペーハー Nagase(Europa)GmbH	€700	1980/04	100.00 (100.00)	卸売販売業 Wholesaler
ナガセタイランドリミテッド Nagase(Thailand)Co., Ltd.	BAHT87,000	1989/03	97.79 (2.21)	輸出入、仲介貿易、市場開発、情報収集 Import & export, trading, market development, information gathering
ナガセマレーシアビーエイチディ Nagase(Malaysia)Sdn. Bhd.	M\$1,500	1981/09	51.00	輸出入、仲介貿易、市場開発、情報収集 Import & export, trading, market development, information gathering
長華塑膠(股)有限公司 Nagase Wahlee Plastics Corp.	NT\$52,000	1990/12	60.00 (5.00)	貿易業 Trading
ナガセカリフォルニアコーポレーション Nagase California Corp.	US\$2,200	1988/06	100.00	輸出入、仲介貿易、市場開発、情報収集 Import & export, trading, market development, information gathering
台湾長瀬(股)有限公司 Nagase(Taiwan)Co., Ltd.	NT\$45,000	1988/08	100.00	卸売販売業 Wholesaler
カナダモールドテクノロジーインコーポレーテッド Canada Mold Technology Inc.	C\$5,000	1989/03	53.00	金型製造、販売及びメンテナンス Mold making, sales and maintenance
ナガセアメリカホールディングスインコーポレーテッド Nagase America Holdings Inc.	US\$1,000	2002/01	100.00	Nagase America Corp.および Nagase Plastics America Corp.のホールディングカンパニー Holding Company of Nagase America Corp. and Nagase Plastics America Corp.
ナガセプラスチックアメリカコーポレーション Nagase Plastics America Corp.	US\$1,000	2002/01	(100.00)	合成樹脂の輸出・輸入および販売 Import & export, sale of plastics

注)「議決権の所有割合」欄の(内書)は間接所有割合です。

Note: Inside of parenthesis of the box of 'shares of having resolution' right is indirect one.

株式関連 Matters relating to stocks

株価、出来高の推移 Change of stock prices and turnover



株価 Stock prices	1997				1998				1999				2000				2001			
高値 High price	925	907	665	525	522	619	489	530	635	630	538	493	598	640	581	570	650	620	588	591
安値 Low price	770	580	363	308	417	430	323	345	462	470	394	352	370	508	381	401	505	488	511	485
終値 Closing price	907	590	380	509	506	488	387	485	575	529	419	395	598	570	425	535	605	488	545	510
出来高 Turnover	5,131	5,481	5,626	8,813	5,316	6,629	6,064	8,139	7,316	10,863	9,054	12,440	15,363	10,708	6,184	6,520	5,017	4,329	3,739	3,383

注)上記の数値は東京証券取引所の数値に基づいています。

注) I は4～6月、II は7～9月、III は10～12月、IV は1～3月の数値を表しています。

注)自己株式消却については、2002年3月末までの累計で、13,020千株(総額5,996百万円)を実施しました。

年度別としては1998年度中に5,349千株(総額2,355百万円)、1999年度中に4,542千株(総額2,117百万円)

2000年度中に2,600千株(総額1,256百万円)、2001年度中に529千株(総額266百万円)を消却しました。

Note: Above numeric numbers are based on the one of Tokyo Stock Exchange.

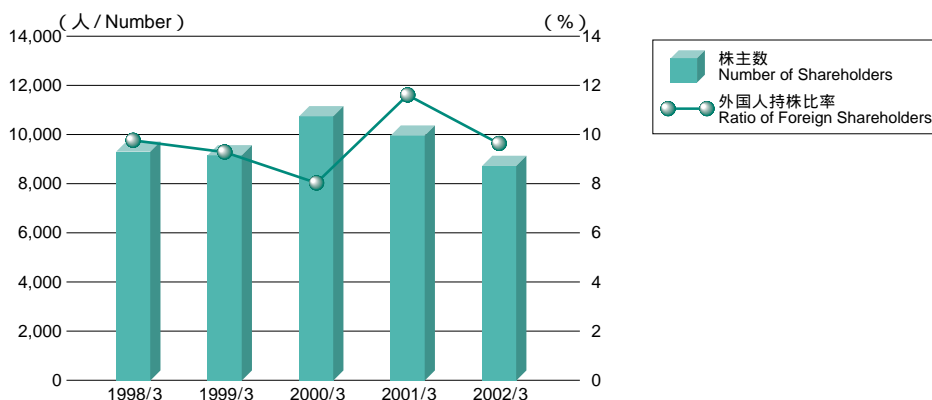
Note: I represents the figures for from April to June, II for from July to September, III for from October to December, and IV for from January to March.

Note: The erasure of treasury stocks have been executed as follows: The total figures are 13,020 thousand stocks(5,996 million yen)by the end of March in 2002.

Every FY's figure was, 5,349 thousand stocks(2,355 million yen)during FY 1998, 4,542 thousand stocks(2,117 million yen)during FY 1999,

2,600 thousand stocks(1,256 million yen)during FY 2000, 529 thousand stocks(266 million yen)during FY 2001.

株主の推移 Change of shareholders



		1998/3	1999/3	2000/3	2001/3	2002/3
株主数(人)	Number of Shareholders	9,329	9,210	10,742	9,997	8,738
外国人持株比率(%)	Ratio of Foreign Shareholders(%)	9.75	9.28	8.05	11.66	9.67

会社概要

長瀬産業株式会社

本社

〒550-8668 大阪市西区新町一丁目1番17号
〒103-8355 東京都中央区日本橋小舟町5番1号

設立

1917年12月

問合せ先

総務部

電話(03)3665-3028 FAX(03)3665-3030

URL <http://www.nagase.co.jp>

株式名義書換代理人

住友信託銀行株式会社
大阪市中央区北浜四丁目5番33号

株式の上場

東京証券取引所及び大阪証券取引所第一部上場(1970年8月)

株式の状況

会社が発行する株式の総数 346,980,000株
発行済株式の総数 138,408,285株

株主数

8,738名

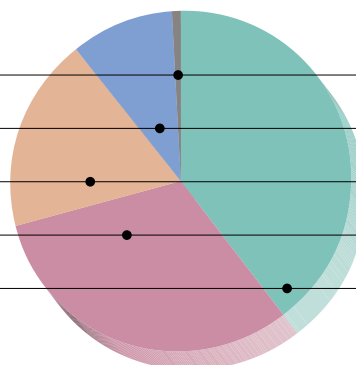
(2002年3月31日現在)

大株主

株主名	当社への出資状況		当社の大株主への出資状況	
	持株数	持株比率	持株数	持株比率
	千株	%	千株	%
株式会社 三井住友銀行	6,867	4.96	7,102	0.12
住友信託銀行株式会社	5,841	4.22	4,060	0.28
株式会社 東京三菱銀行	5,402	3.90	—	—
株式会社 UFJ銀行	4,603	3.33	—	—
日本生命保険相互会社	4,228	3.05	—	—
長瀬 洋	4,134	2.99	—	—
エスエヌエフイー マック ジャパン アクティブ シェアホルダー ファンド エルビー	4,115	2.97	—	—

所有者株式分布状況

証券会社	25名	1,021千株 (0.74%)
外国法人等	55名	13,378千株 (9.66%)
その他法人	321名	25,397千株 (18.35%)
個人その他	8,252名	43,293千株 (31.28%)
金融機関	85名	55,318千株 (39.97%)



Securities companies:	25	1,021 thousand stocks (0.74%)
Foreign corporation, etc:	55	13,378 thousand stocks (9.66%)
Other corporation:	321	25,397 thousand stocks (18.35%)
Private and others:	8,252	43,293 thousand stocks (31.28%)
Financial institutions:	85	55,318 thousand stocks (39.97%)

会計監査人

新日本監査法人

Company profile

Nagase & Co., Ltd.

Head office

1-17, Shinmachi 1-Chome Nishi-ku, Osaka
5-1, Kobunacho Nihonbashi Chuo-ku, Tokyo

Foundation

December, 1917

Contact to

General Affairs Department

Tel(03)3665-3028 Fax(03)3665-3030

URL: <http://www.nagase.co.jp>

Share transfer agent

Sumitomo Trust & Banking Co., Ltd.
5-33, Kitahama 4-Chome, Chuo-ku, Osaka

Stock listed

Listed at the first section of Tokyo and
Osaka Stock Exchange(since August, 1970)

Stock status

Number of shares to be issued by the company : 346,980,000
Number of issued shares : 138,408,285

Number of shareholders

8,738

(as of March 31, 2002)

Major shareholders

Name	Investment to our company		To our Major shareholders	
	No of shares held	Special rate	No of shares held	Special rate
	M shares	%	M shares	%
Sumitomo Mitsui Bank	6,867	4.96	7,102	0.12
Sumitomo Trust Bank	5,841	4.22	4,060	0.28
Tokyo Mitsubishi Bank	5,402	3.90	—	—
UFJ Bank	4,603	3.33	—	—
Nippon Life Ins. Co.	4,228	3.05	—	—
Hiroshi Nagase	4,134	2.99	—	—
SNFE MAC Japan Active Shareholder Fund, L.P.	4,115	2.97	—	—

Status of proprietary stock distribution

CPA

Shin Nihon & Co.